

## Noah's Ark and Early Man Seminars Information Brochure Harlingen and Corpus Chrsti, TX

Arnold Mendez, a COGWA Pastor, has presented the Noah's Ark and Early Man seminars in more than 120 CoG congregations. He has studied the Genesis account and the creation evolution controversy for the last 45 years. He is a retired faculty member and chemistry instructor from Texas A&M University-Corpus Christi. He holds both Master and Bachelor of Science degrees in Biology (minor Chemistry). He is presently a Construction Trades Academy Instructor/Project Manager at Del Mar College, and very knowledgeable about construction and building concepts. Both of these fields of study have served him well in the presentation of these Biblical seminars.



### Seminar Format

The Seminar presentation is scheduled for a double Sabbath service. The morning presentation will be the Noah's Ark seminar followed by the Early Man seminar in the afternoon. The Noah's Ark seminar will be held from 10 am – 12 noon. There will be a meal break, and then the Early Man Seminar will be held from 2 – 4 pm. There will be a question and answer session as part of the seminar format.

As part of the seminar presentation, various scale models of Noah's Ark will be on display. Museum quality skull and fossil will also be on display as well as posters of evolution—creation topics. Because of all the material that will be on exhibit you are encouraged to attend 30 minutes prior to the start of the seminar. This seminar will be of significance to anyone that is interested in the story of the Genesis Flood.

### Noah's Ark Seminar:

- Includes various scale models of Noah's ark.
- Poster displays of the Geological evidence of the Biblical flood.

Topics Include:

- The flood of Noah—can we believe the Bible?
- Could the ark carry all the animals?
- What did the ark look like?

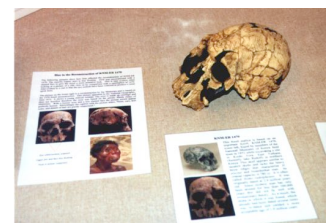


### Early Man Seminar:

- Includes poster displays of evolution/creation topics.
- Displays of relevant fossils and crania (skulls).

Topics Include:

- Who were *Homo erectus*, Neanderthal man, and *Australopithecus*?
- Did Pre-Adamic man exist?
- The antediluvian world and its effects on humans.



**Time and Location:** The Seminars will be presented on two Sabbaths.

**Harlingen TX**-August 17<sup>th</sup> at the Holiday Inn Express, located at 501 S. P street.  
**Corpus Christi TX**-November 2<sup>nd</sup> , St. Paul United Church of Christ, located at 5525 Lipps Blvd.

